



bottineau
neighborhood association

BOTTINEAU GAZETTE

A Publication of the Bottineau Neighborhood Association
2205 California Street #107 Minneapolis, MN 55418
612.782.2145 bn@bottineauneighborhood.org

In This Issue

Japanese Beetles..... 1
 Festival of Lights..... 2
 Phone Numbers 2
 R.E.D. See It 2
 New Crime Prevention Specialist..... 3
 Gardening Corner..... 3
 Websites..... 3
 Calendar..... 2

Bottineau Neighborhood Association

- Board of Directors:
- Mariam Slayhi
 - Jim Rosenberg
 - Matt Ruby
 - Kris Ziegler
 - Troy Clark
 - Bob Marget
 - (vacant)



Please Recycle

December
2012

Japanese Beetle Control Requires Community-Wide Effort

In the US, the scourge of Japanese beetles began out east in 1916 then gradually spread west until it reached Minnesota in recent years. These beetles have the annoying habit of devastating one small area while leaving other areas unscathed; then, a few years later, they spread like wildfire. Infested yards, gardens and fields yield almost no harvest because the hungry beetles skeletonize the leaves of their favorite plants, weakening the plants' ability to produce fruit. Then, once their favorite leaf foods are stripped from an area, the beetles ravage the blossoms of other plants, delaying or eliminating food production.

My yard was one such area. Last summer, the beetles denuded grape leaves and roses, while also feasting on the leaves of elm and apple trees. Following this, the buds and blossoms of every tomato, green bean, cucumber, broccoli, Brussels sprout and cilantro plant were devoured. No beans, no tomatoes, no salsa. The only plants that produced fruit were those which had blossomed and produced before June 25, 2012, when

Bottineau Festival of Lights

This winter season, we encourage all Bottineau neighbors to light up their balconies, porches or yards. Why? Because at 5:00 PM on December 22nd, judges will canvas the neighborhood to find the three most inspiring light displays!

Prizes will include a \$50.00 gift certificate from the Sample Room, a \$25.00 cash award, or a \$10.00 Eastside Food COOP gift certificate for 1st, 2nd and 3rd places, respectively.

Remember, festive lights make the winter nights more beautiful and less intimidating. Won't you join us?

the scourge in my yard began. But this was not its true beginning. In 2010, I had a few beetles but was relieved when they disappeared after a couple of weeks. In 2011, I had more, but they were easily managed by picking and crushing or by using traps. Still, had I known then what I know now, I would have

Phone

Police, Fire and Medical
Emergency:
911

Minneapolis City Info:
311

Bottineau Neighborhood
Association
782-2145

3rd Ward Councilwoman
Hofstede
673-2203

Hennepin County
Commissioner (Vacant)
348-7882

Parks Commissioner
Wielinski
230-6443

Bottineau Park
370-4958

Family Violence,
Domestic Abuse, Child
Abuse
673-3072

Housing Inspections
673-5858

NE Home Ownership
Center
378-7985

Community Crime
Prevention
673-2797

Pierre Bottineau Library
630-6890

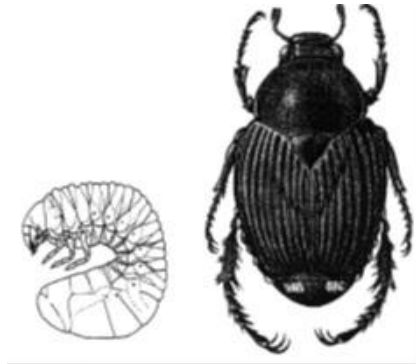
Minneapolis Park Board
230-6400

Minneapolis Solid Waste
and Recycling
673-2917

Traffic Enforcement
673-3443

> JAPANESE BEETLES *cont.*

gotten ahead of the curve instead of waiting for last summer's devastation. Now, whole areas of my yard are devoid of grass as the Japanese beetle grub eats grass roots to mature. Because I have kept an organic yard since 1991, there was no pesticide, insecticide or herbicide to inhibit the grubs. And they went wild.



Here's what you can do to help both the neighborhood and your immediate area: Treat your yard with milky spore, an organic treatment fungus that is safe for indigenous grubs and will not harm animals, birds or humans if applied correctly. It is specifically lethal to the Japanese beetle grub and will inoculate your yard for up to 10 years; some reports suggest even 20. You need to treat the area for three consecutive seasons (such as spring, summer and fall; or fall, spring and summer) and all frost must be out of the ground for the treatment to be effective. The only danger is if you inhale the powder while applying it to your yard, field or orchard, so apply the milky spore on a calm day. Also, it needs to be followed by rain or light sprinkling from a hose or water can. My husband and I treated out big corner lot in just under four hours at a cost of \$75.00.

The trick to city living is that we need to *act in concert* to make treatments like this truly effective. Encourage your neighbors to treat their property as

well so that these beetles can be controlled throughout your neighborhood. Milky Spore can be purchased at *Interior Gardens*, 1620 Central Ave NE.

R.E.D. See it

The Riverfront Entertainment District (R.E.D.) is a new initiative to make the river front area safer during the holiday celebration season. It grew out of the "Holiday Beat" last year. The group's founding members are Jax Café, Stanley's Northeast Bar Room, Psycho Suzi's Motor Lounge, and Grumpy's Northeast. They pooled their resources and hired police to patrol the R.E.D. zone last year. This fall a silent auction and fundraiser was held at Jax Café on November 14th to help pay for this season's beat patrol. The additional patrols will be on the streets from Thanksgiving through New Year's Day.

R.E.D zone boundaries are as follows: 6th St NE to the East, Marshall St NE to the West, Lowry to the North and 8th Ave NE to South. All of Bottineau neighborhood is included in this R.E.D. zone. R.E.D participants meet monthly to review the latest crime statistics, meet with the 2nd Precinct Inspector and assess how well we are controlling the crimes in the area. All businesses in the R.E.D. zone are welcome to participate at meetings and are encouraged to engage with the 2nd precinct in making the area safer for all.

Northeast Chamber of Commerce is the fiscal agent for R.E.D. 3rd Ward Council Member Diane Hofstede began this effort with the business community last year to address safety and security concerns in key areas identified by the 2nd precinct.

New Crime Prevention Specialist for the 2nd Precinct

Susan Bradshaw is the new 2nd Precinct Crime Prevention Specialist in Northeast. She joins Nick Juarez in assisting neighbors and block clubs with crime statistics, crime prevention strategies and personal safety. Her email address is:

susan.bradshaw@minneapolismn.gov

Please contact her if you have questions regarding Bottineau safety or crime issues. Susan has a background in criminal justice and community engagement. Welcome.

Gardening Corner: California Street Farm Thrives

Bottineau Neighborhood urban farmers, Jillia Pessenda and Jim Bovino had a successful first season. The farm is located at California St. NE and 22nd Ave NE across the street and to the south of the California Building. In March of 2012 the land was cleared and vegetables were planted. Sixteen neighbors joined as CSA (Community Supported Agriculture) members of the California Street Farm. A CSA member gets food in exchange for supporting the farm by subscribing for a weekly delivery of fresh food for an upfront fee paid to the farmer.

Current regulations over Minneapolis urban farms are being tweaked to make urban farming more successful. The current zoning ordinances require a \$130.00 annual fee for

> **CALIFORNIA STREET FARM** *cont.*

selling vegetables at a farm stand for 15 days a year. Many urban farms sell one day a week from 7 AM to 7 PM as allowed by ordinance. Gardeners and farmers know growing season is longer than 15 weeks so urban farmers hope the days allowed per season will be expanded and the fee lowered.

Northeast gardeners know that hoop frames or houses must be no longer than 6.5 feet but urban farmers may have hoop houses that are 12 feet or longer. Hoop houses are used to extend the growing season for farmers and gardeners. They are long half-circle frames covered in translucent polyethylene that are placed over rows of vegetables in the spring and fall. Hoop frames and house extend the growing season for some vegetables by months.

California Street Farm is set to expand and grow in 2013. The land owners, Jennifer Young and John Kramer support the work and vision of the farmers. Be sure to look for the positive activity generated due to Jillia's and Jim's hard work this upcoming season.



Websites

Bottineau Neighborhood Association
bottineauneighborhood.org

Minneapolis
www.minneapolismn.gov

3rd Ward
www.minneapolismn.gov/ward3

Inspections
www.minneapolismn.gov/inspections

Hennepin County
co.hennepin.mn.us

Park Board
minneapolisparcs.org

Minnesota Pollution Control Agency
www.pca.state.mn.us

Public Education NE
publicedne.blogspot.com

Friends of the Mississippi
fmr.org

NE Minneapolis Arts Association
nema.org

Neighborhood Revitalization Program
nrp.org

MN State Legislature
www.leg.state.mn.us

Minneapolis Crime Alerts
www.minneapolismn.gov/police/crimealert

Eureka Recycling
twincitiesfreemarket.org

Federal Trade Commission
www.ftc.gov

Neighborhood & Community Relations
www.minneapolismn.gov/ncr

Bottineau Neighborhood Association
2205 California Street #107
Minneapolis, MN 55418
612.782.2145
bna@bottineaneighborhood.org

Mark Your Calendars



12/11 BNA Board Meeting, 7:00 p.m.
2205 California St NE, Suite 107
(Call 612-801-7834 if door is locked)

12/12/12 Mohamed Barre Photo Art Show
1808 University Community Room
4-9 PM

NOTE: The public is welcome at all BNA meetings. All meetings are accessible and requests for special accommodations at BNA meetings may be made by contacting us no less than one week prior to the event. This publication can be made available in an alternative format. Please contact BNA with specific requests.

Important Winter Dates in Bottineau

November 15, 2012 (A.H. 1434)
Islamic New Year

December 8, 2012 (A.M. 5773)
Jewish Chanukah begins

December 8, 2012 (B.L. 2239)
Tibetan Tsonkhapa Festival

December 25, 2012 (A.D. 2012)
Christian Christmas begins

In History

December 7, 1787 – Delaware became the first state to adopt the new constitution of the United States of America.

December 15, 1791 – The Bill of Rights (first 10 amendments to the US Constitution) became effective following ratification by Virginia.

For more information or for deadlines,
please call 782-2145